

# SOUND THRASCHING

R. HAMM

BREATH ONLY

SOPRANO

ALTO

TENOR

BARI

5

5

5

5 \*

9 9 9 9 \*

13 13 13 \*

Musical staff 1, treble clef, starting with measure 17. The staff contains a sequence of eighth and sixteenth notes.

Musical staff 2, treble clef, starting with measure 17. The staff contains a sequence of eighth and sixteenth notes.

Musical staff 3, treble clef, starting with measure 17. The staff contains a sequence of eighth and sixteenth notes.

Musical staff 4, treble clef, starting with measure 17. The staff contains a sequence of eighth and sixteenth notes with asterisks above the first, second, third, and fourth measures. The instruction "SING SOFTLY" is written below the staff.

Musical staff 5, bass clef, starting with measure 21. The staff contains a sequence of eighth and sixteenth notes. The instruction "SING SOFTLY" is written below the staff.

Musical staff 6, bass clef, starting with measure 21. The staff contains a sequence of eighth and sixteenth notes. The instruction "SING SOFTLY" is written below the staff.

Musical staff 7, bass clef, starting with measure 21. The staff contains a sequence of eighth and sixteenth notes. The instruction "SING SOFTLY" is written below the staff.

Musical staff 8, bass clef, starting with measure 21. The staff contains a sequence of eighth and sixteenth notes with asterisks above the first, second, third, and fourth measures.

PLAY...WARBLE AS IF TUNING A STRING INSTRUMENT



25

PLAY...WARBLE AS IF TUNING A STRING INSTRUMENT



25

PLAY...WARBLE AS IF TUNING A STRING INSTRUMENT



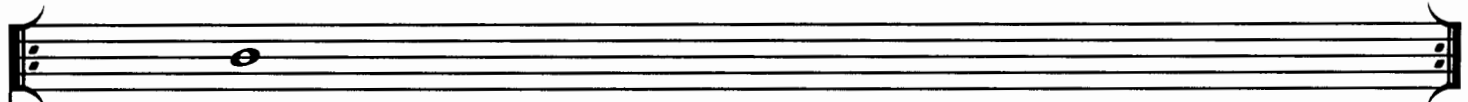
25

PLAY...WARBLE AS IF TUNING A STRING INSTRUMENT



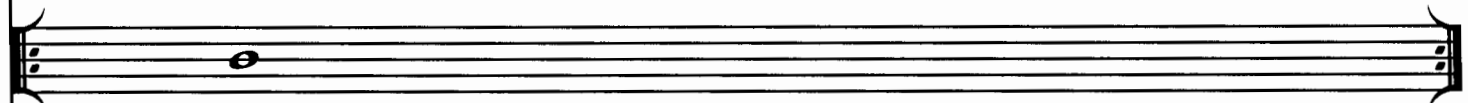
25

OPEN CHANT



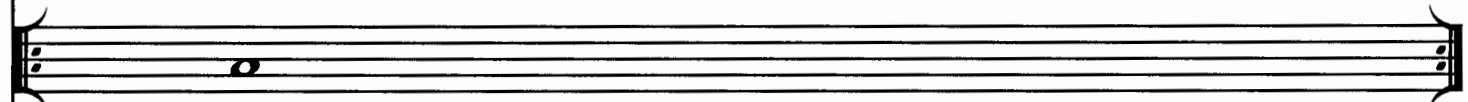
29

OPEN CHANT



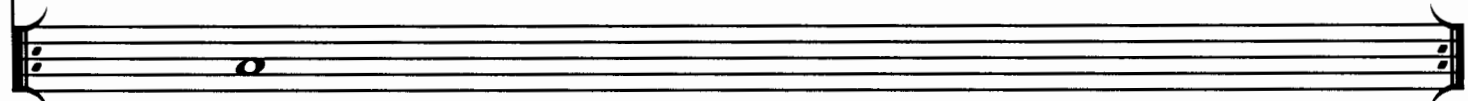
29

OPEN CHANT



29

OPEN CHANT



29



BREATH ONLY

Musical staff 1, starting at measure 43. It contains four measures of music in treble clef. The first two measures have eighth notes, and the last two have a whole note rest followed by eighth notes. The number 43 is written below the first measure.

BREATH ONLY

Musical staff 2, starting at measure 43. It contains four measures of music in treble clef, identical to staff 1. The number 43 is written below the first measure.

BREATH ONLY

Musical staff 3, starting at measure 43. It contains four measures of music in treble clef, identical to staff 1. The number 43 is written below the first measure.

BREATH ONLY

Musical staff 4, starting at measure 43. It contains four measures of music in treble clef. The first three measures are identical to staff 1, but the fourth measure has a star symbol (\*) above the first eighth note. The number 43 is written below the first measure.

Musical staff 5, starting at measure 47. It contains four measures of music in treble clef. The first three measures are identical to staff 1, and the fourth measure has a whole note followed by a slur. The number 47 is written below the first measure.

Musical staff 6, starting at measure 47. It contains four measures of music in treble clef, identical to staff 5. The number 47 is written below the first measure.

Musical staff 7, starting at measure 47. It contains four measures of music in treble clef, identical to staff 5. The number 47 is written below the first measure.

Musical staff 8, starting at measure 47. It contains four measures of music in treble clef, identical to staff 5. The number 47 is written below the first measure.